

IDEAL BINDER

cod. IDEALBINDER

Adhesion primer co-polymer for cement-based mixtures

DESCRIPTION

Ideal Binder is a water-based single component co-polymer, white in colour with a high percentage of solid residue.

FEATURES

It is an extremely versatile, non-toxic product with a high percentage of solid residue. It is used as a primer and as a binder for cement mixtures for cement-based decorative floors in low thickness.

Ideal Binder:

- Improves the adhesion of cement-based flooring to the substrate.
- Improves abrasion resistance
- Increases resistance to frost
- Reduces water absorption

USES

Ideal Binder is used:

- As liquid component of STENCIL TOP (see data sheet)
- As a liquid component of RASICO (see data sheet)
- As an adhesion primer to concrete backgrounds for Sassoitalia®, Betontop, Topfloor
- As an additive for cementitious mortars and for rough-in mortar

USE AS AN ADHESION PRIMER ON A CONCRETE SUBSTRATE

The surface to be treated must be free from oil stains, waxes, paints, resins and any other products that may hinder the penetration of the binder.

The concrete substrate must be previously scarified or possibly processed with TEXTURE-BROOM or similar during casting.

Before application, wash thoroughly with a high-power pressure washer.

Wet the surface to be treated with high-pressure water

Mix IDEALBINDER thoroughly and mix with cold water in a proportion of 1:3.

Then add to the solution 2 parts by weight of cement to a part of liquid and then spread the mixture evenly with a broom.

USE AS LIQUID COMPONENT FOR CEMENT-BASED COATINGS

Follow the relevant datasheets

TECHNICAL INFORMATION

Solid content	48 %
PH	9.0 – 11.0
TOXICITY	NON-TOXIC
MINIMUM APPLICATION TEMPERATURE	5°C

CONSUMPTION

As an adhesion primer consider 0,15 kg/m².

The consumption is as follows

- IDEAL BINDER 0,15 kg/m²
- Water 0,45 kg/m²
- Cement 1.2 kg/m²

PACKAGING / STORAGE / DISPOSAL

Containers of 10 and 25 L.

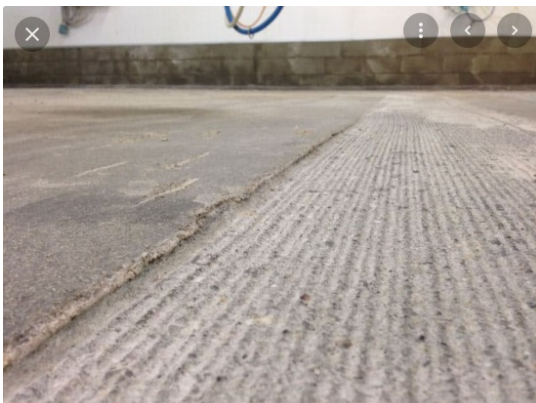
It can be kept for about 12 months in the original containers at a temperature between 5° and 30° C.

PRECAUTIONS

In the case of restorations to worn substrates it is recommended to perform adhesion tests.

Avoid contact with skin, nose, eyes etc. In case of accidental contact, wash thoroughly with soap and water and consult a doctor. Do not ingest; consult the safety data sheet.

Refer to the SDS.



IMPORTANT

The manufacturer disclaims any responsibility for the achievement of the services declared for the system and for the success of the work if it is not used in accord with its instructions. The manufacturer disclaims any responsibility for the achievement of the services declared for the system and for the success of the work if it is performed even partially in contrast with these guidelines or with products not covered by them.

The manufacturer also declines any responsibility for the aesthetic aspect of the flooring which depends on the installation methods, working times and climatic conditions of the site. The applicator must take these into account when scheduling and applying the materials supplied by the manufacturer.

The applicator notes that Ideal Work is in no way responsible for the suitability of the solution chosen in relation to:

A) Substrate suitability, climatic conditions or any other external parameter which may affect the performance of the Ideal Work products being used.

B) The stresses to which Ideal Work products may be put under operation.

It also notes that the indications provided by Ideal Work in its technical documentation are to be considered a necessary condition but do not in any way relieve the contractor of the responsibilities and technical evaluations of the applicator. The data can be changed at any time. Also note that the products are intended for professional use only.